

# Observe the following instructions for safe port entry:

1. Make use of radar.
2. Confirm the ship's location.
3. Keep someone on watch.
4. Use the appropriate charts.
5. Obtain meteorological and oceanographic information and evacuate as soon as possible.
6. Prevent drowsiness.
7. Constantly watch on CH 16.

In case of distress, report to:  
Call name: Kushiro Hoan  
Calling frequency: International VHF CH 16 or 2182 kHz



# Prevent grounding accidents!

Points to observe when entering Kushiro Port



**JAPAN COAST GUARD**

1st Regional Coast Guard Headquarters  
Kushiro Coast Guard Office

Near Kushiro Port, fog is present from April to September, thereby worsening visibility. Take full advantage of navigation instruments to check the ship's location.

## ***Pay attention to shallow waters!***

Since there are shallow waters around Shirito Reef, maintain a sufficient distance from the land while cruising.



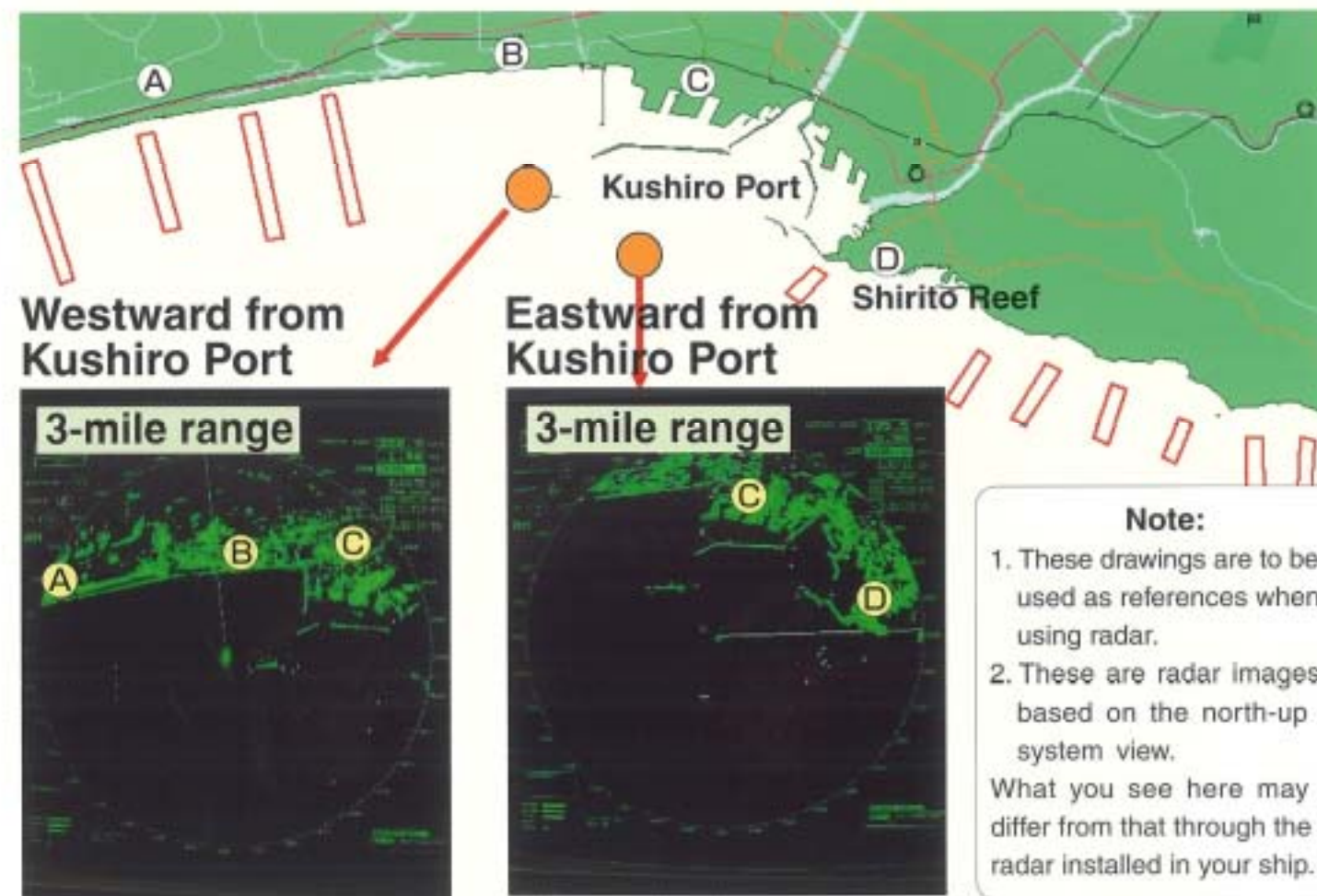
**A marine grounding accident that occurred at Shirito Reef in the past**

## ***Pay close attention to stationary fishing nets!***

When entering the West Port area of Kushiro Port, pay close attention to stationary fishing nets installed within the 3-mile range from the shore.

Caution! The location of stationary fishing nets may change.

Location of stationary fishing nets  
□ from July to December  
● Ships



Radar reflectors are attached to the tips of stationary fishing nets, but it may become difficult to confirm these reflectors in the radar image depending on the weather. Please enter port by confirming the ship's location.