

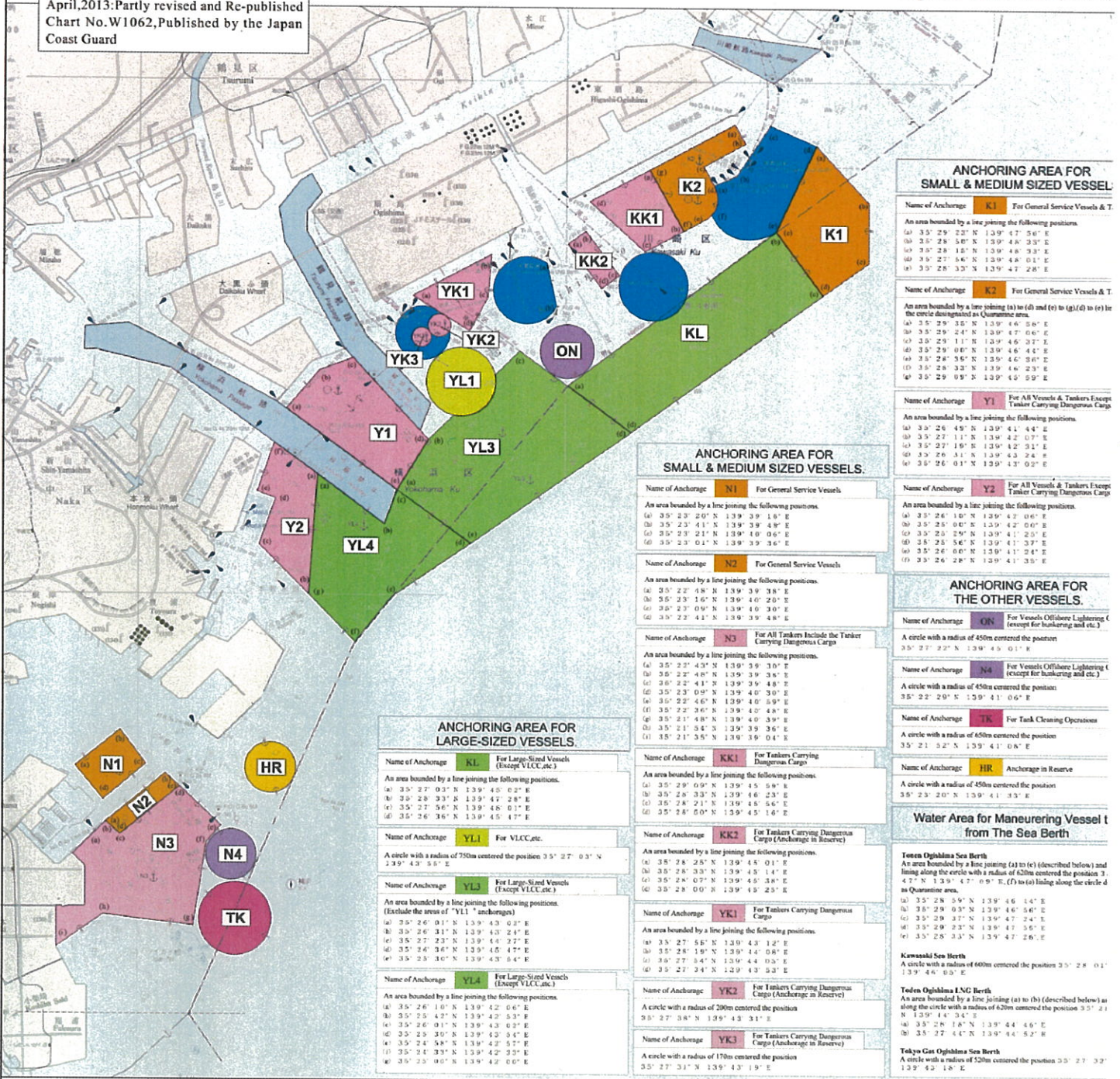
# NOTICE to Mariners for Anchorages of "VESSELS CARRYING DANGEROUS CARGO" and "GENERAL SERVICE VESSELS" in the Port of KEIHIN (Yokohama-ku and Kawasaki-ku, only)

Anchorages are designated as the figure since May 1, 2013. Vessels, intending to anchor in area, must do according to the following remarks.

April, 2013

Captain of the Port, KEIH

May, 1998 : The first edition  
 March, 2003 Partly revised and Re-published  
 April, 2013: Partly revised and Re-published  
 Chart No. W1062, Published by the Japan Coast Guard



**\* REMARKS \***

- ALL VESSELS of 10,000 G.R.T or more and/or of 150 m long(LOA) or more are required to anchor at the "AREA FOR LARGE-SIZED VESSELS". ALL NON-LARGE-SIZED VESSELS are required to anchor at the "AREA FOR SMALL/MEDIUM-SIZED VESSELS".
  - ALL GENERAL SERVICE VESSELS of less than 500 G.R.T are advised to anchor at the following anchorages for SMALL/MEDIUM-SIZED VESSELS: K1, K2, Y1, Y2, N1, and N2. Be sure not to anchor at "Sea Berth area" shown in blue in the above chart.
  - ALL VESSELS intending to anchor must carry out the following requirements and make efforts to prevent marine accident caused by dragging anchor.
    - Strength a watch system and promote proper lookout.
    - Pay attention to the latest weather information and oceanographic conditions continuously.
    - Maintain continuous watch on the VHF 16ch.
    - Maintain AIS in operation.
- \* Especially PURE CAR CARRIERS and CONTAINER VESSELS, easy to affect the strong wind, are advised to take all possible measures to prevent marine accidents caused by dragging anchor.

Where To Call

Yokohama Coast Guard office Phone : 045-201-8180

Kawasaki Coast Guard Station Phone : 044-266-0118