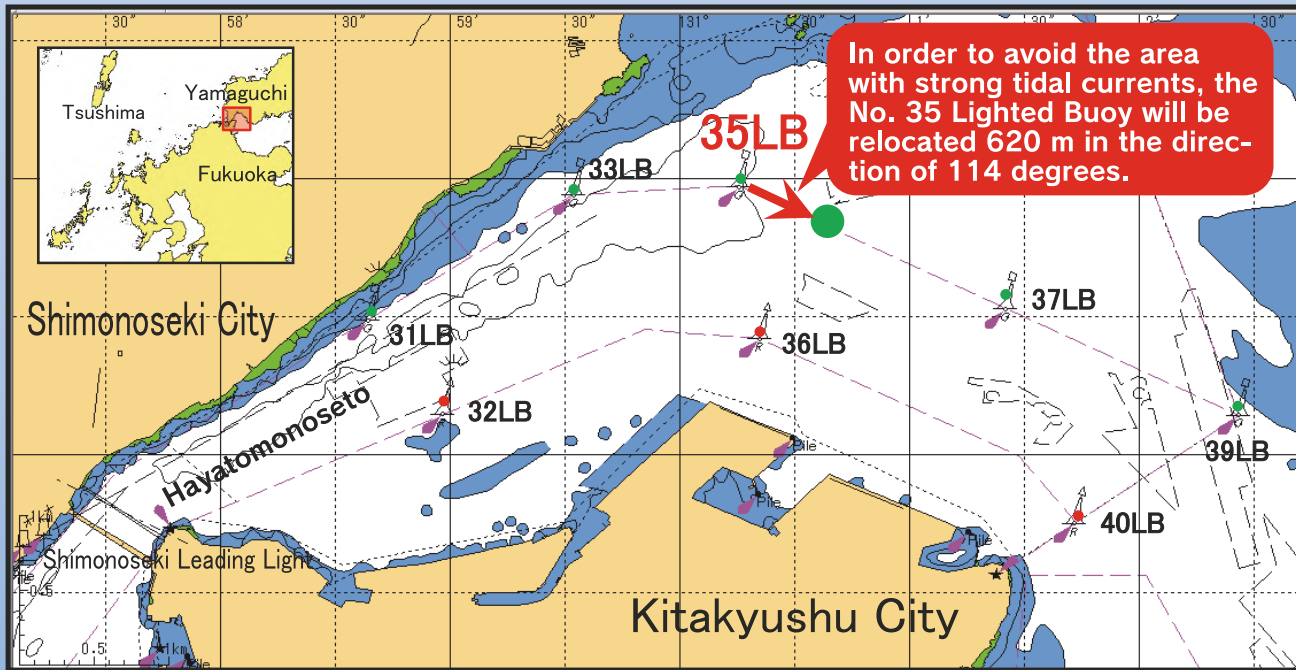


Relocating the Kanmon Route No. 35 Lighted Buoy



Notes:

- ◆ The lighted buoy will be relocated but the normal line for passage will not change.
- ◆ Special caution is needed for vessels that use the No. 35 Lighted Buoy as a guide for veering.
(Keep to the right in the passage!)

1. Expected date of relocation

Late October 2015

2. New position

North latitude: 33 degrees, 58 minutes, 50 seconds
East longitude: 131 degrees, 00 minutes, 37 seconds

3. Old position

North latitude: 33 degrees, 58 minutes, 58 seconds
East longitude: 131 degrees, 00 minutes, 15 seconds

The Kanmon Route No. 35 Lighted Buoy, which has been located in an area with strong eastward tidal currents, causes vessels to converge and often hit the buoy. The lighted buoy will be relocated to a new position to prevent the buoy from being damaged or moved.

Please note that there will be no object at the old position after the lighted buoy is relocated.

The beacon number of the Kanmon Route No. 35 Lighted Buoy will remain lit at night.

Present state



Change

After change



1. Expected start of lit number:

Late October 2015

2. Details of lighting

"35" will be continuously lit at night (green).



Traffic Department, 7th Regional Coast Guard Headquarters