

Voluntary Traffic Control Rules at Toyohashi Passage -Mikawa Port

Mikawa Port Navigation Safety Measures Committee

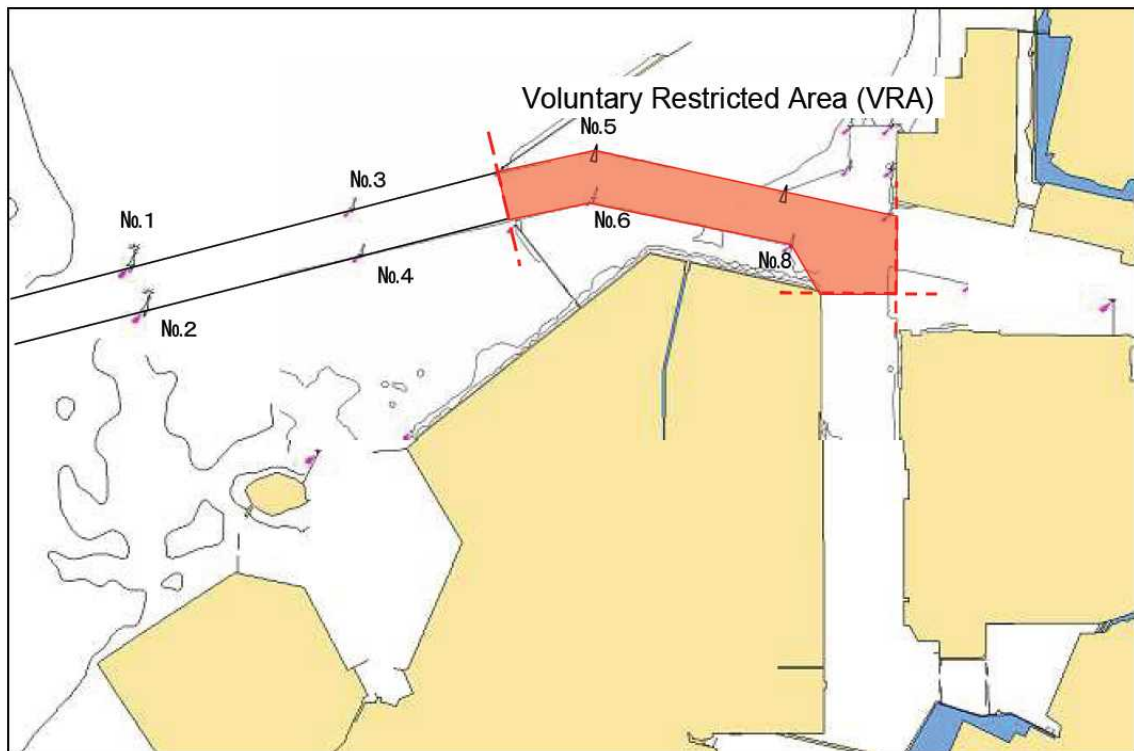
1 The vessel of 100meters LOA and more who intend to enter into or sail from Mikawa Port through Toyohashi Passage are kindly requested to observe the following Voluntary Traffic Rules.

(1) All vessels of 100meters LOA and more must not overtake/meet other vessels of 100meters LOA and more in the Voluntary Restricted Area (hereinafter VRA) shown in Fig.(1).

(2) The entering vessel of 100meters LOA and more(hereinafter EEE vessel) must give priority to the sailing vessel of 100meters LOA and more (hereinafter SSS vessel) in case there is certain possibility for both vessels to meet inside the VRA.

(in other words, EEE vessel must adjust ETA to VRA and wait for SSS vessel passing the break-water entrance)

Fig.(1). Voluntary Restricted Area



2 In the meantime all vessels of 100meters LOA and more are also requested to contact to Mikawa-wan Port Radio 2(hereinafter MPR2) at the following time/position and obtain information of other vessel to observe the above Voluntary Traffic Rules and make necessary arrangement with the vessel concerned.

(1) EEE vessel

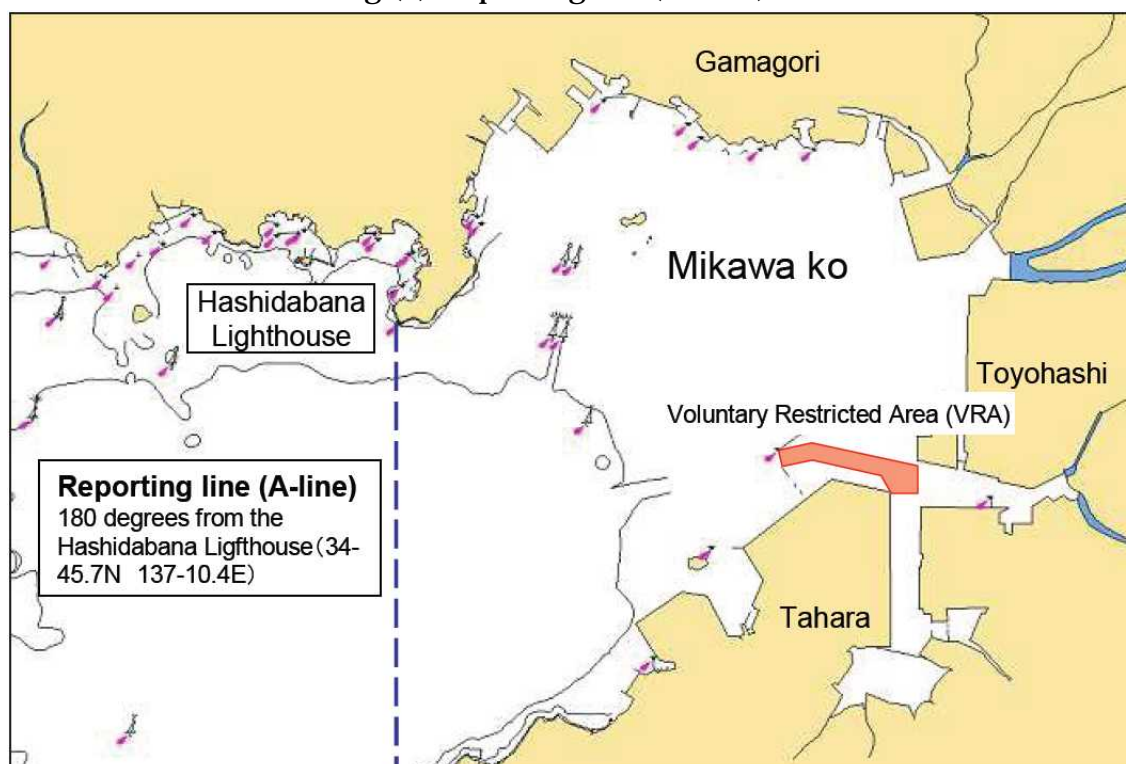
Call MPR2 when the vessel pass the reporting line(A-line) shown in Fig.(2).

In case the vessel is entering from anchorage, call MPR when the vessel hove up her anchor.

(2) SSS vessel

Call MPR2 when the vessel is ready to sail from her berth.

Fig.(2). reporting line(A-line)



- Effective from 1st Mar. 2008 -
- Revised from 18th Feb,2011 -