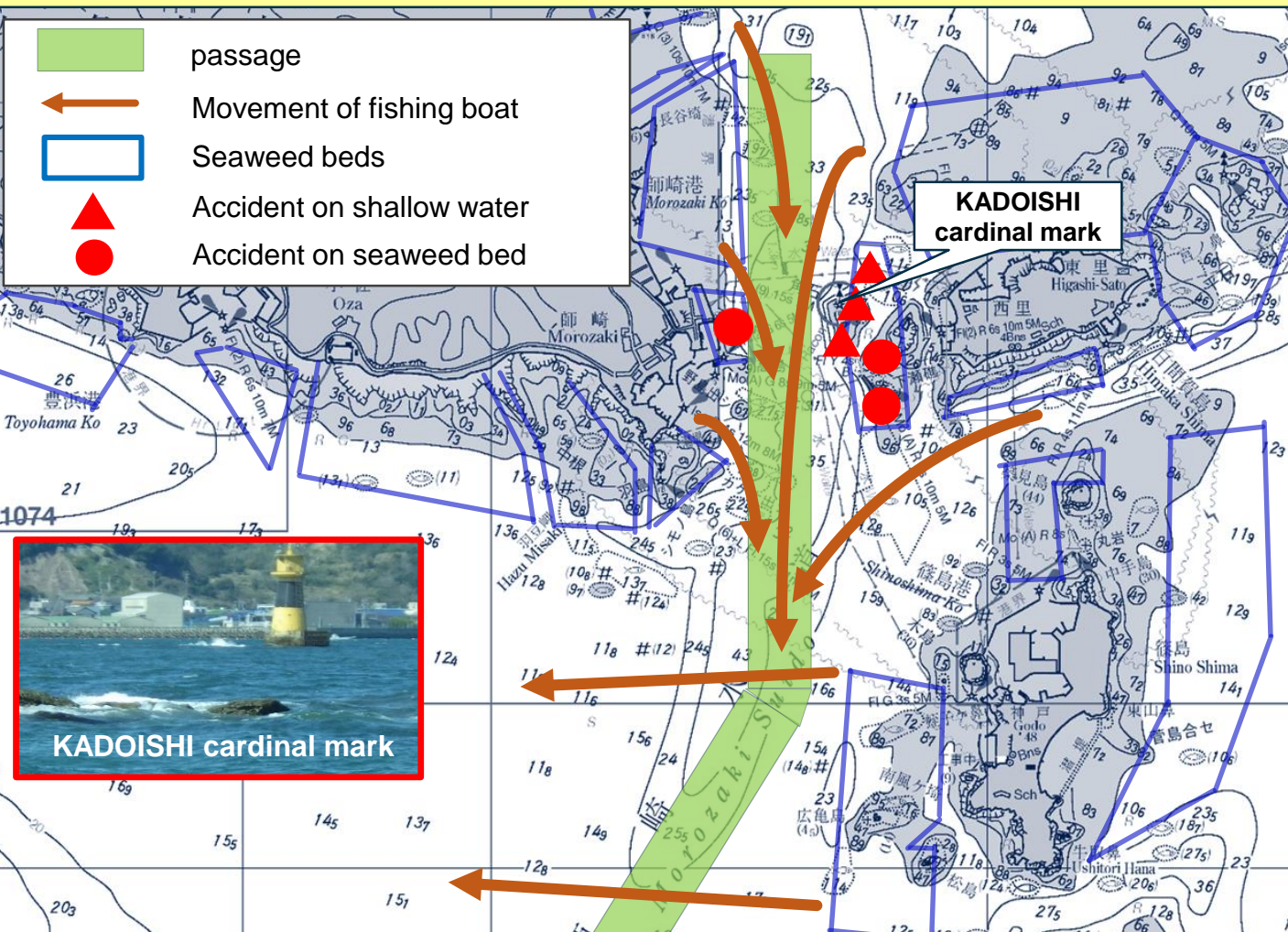


CAUTION !! MOROZAKI SUIDO

Many vessels run aground on rock & seaweed beds.



MOROZAKI SUIDO is congested by many fishing boats. Especially at dawn, vessels run aground because of the situation that a lot of fishing boats are leaving their port all at once and it is difficult to find out seaweed beds.

PRECAUTION

- ◎ note obstruction on your way in advance.
- ◎ keep sharp look out via any method including radar and your own eyes.
- ◎ check your position and keep safe distance to shallow water and seaweed beds.

[CONTACT]



4th Regional Coast Guard Headquarters 052-661-1611
KINUURA Coast Guard Station 0569-22-4999