

For Safe navigation in or around Kanmon area

This map is only reference for navigation, and be sure to use the latest proper chart, such as W135 for navigation

2023

Captain of the Port, Kanmon

Proper Operation of AIS

KEEP WATCH ON VHF CH16 (Only Japanese & English)

Emergency Number at Sea, Dial '118'

- When navigating within port or around port boundaries, every vessel (except some exempt vessels) shall send AIS destination information.
- Within Kanmon Port, vessels (except some exempt vessels) are required to monitor transmissions from Kanmon Marine Traffic Advisory Service Center.

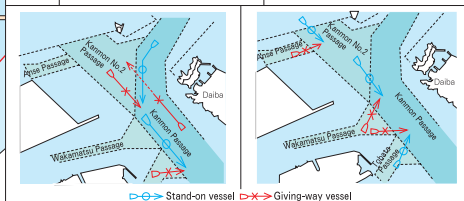
Hinoyamashita Tidal Current Signal Station of Hayatomonoseto Tidal current information

Examples	Variety	Meaning
	E or W	E : Eastward current W : Westward current
	0 ~ 13	Velocity of current (knot)
	1 or 1	↑ : getting faster, ↓ : getting slower

Meaning of an example
The present current is 9knots easterly and getting faster.

Navigation Rules in Kanmon Port that require attention or to which attention should be given. (Extracts)

LEGEND	
In case of meeting situation between a vessel proceeding Kanmon Passage and a vessel proceeding Kanmon No.2 Passage	In case of meeting situation between a vessel proceeding Kanmon No.2 Passage and a vessel coming out of Anse Passage.
In case of meeting situation between a vessel proceeding Kanmon Passage and a vessel going out to Kanmon No.2 Passage from Kanmon Passage,	In case of meeting situation in Kanmon Passage between a vessel coming out of Tobata Passage and a vessel coming out of Wakamatsu Passage,

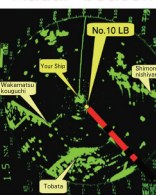


A vessel may overtake other vessel in the Kanmon Passage, consider surrounding situation and only when all conditions described below are met. (Except Hayatomo-Seto Waterway)
1. When a vessel being overtaken does not need to take any cooperative movement in order for an overtaking vessel to pass safely.
2. When an overtaking vessel can keep out of the way of any other vessels safely.

SHIMONOSEKI CITY

As the beacon signal (---) is indicated behind the Kanmon Passage No. 10 Light Buoy once every ten times or more of turning on the radar image of your ship, it enables you to confirm each position of your ship and the Kanmon Passage No.10 Light Buoy even at night.

Radar beacon



TRAFFIC SIGNALS IN HAYATOMONOSETO WATERWAY

- Vessel of 10,000GT or more (as for tanker, 3,000GT or more) shall notice signal and avoid to meet any other vessel of same size at Hayatomonoseto Waterway.
- All other vessels are requested to avoid, as far as practicable, meeting other vessel at the Waterway.

Signal	Meaning
Flashing of letter "H"	A vessel of 10,000 GT (as for tanker, 3,000 GT) or more is now proceeding eastward. West bound vessels shall proceed with great care.
Flashing of letter "T"	A vessel of 10,000 GT (as for tanker, 3,000 GT) or more is now proceeding westward. East bound vessels shall proceed with great care.
Flashing of letter "H" and "T" alternately	Vessels of 10,000 GT (as for tanker, 3,000 GT) or more are now proceeding east-and westwards. Both east and west bound vessels shall proceed with great care.

Within Kanmon Port, vessels over 300 GRT (except small ship) shall exhibit the numeral pennant "1".
*Small ship means steam launches, barges, boats and other ships operated solely or mainly by oars and paddles.

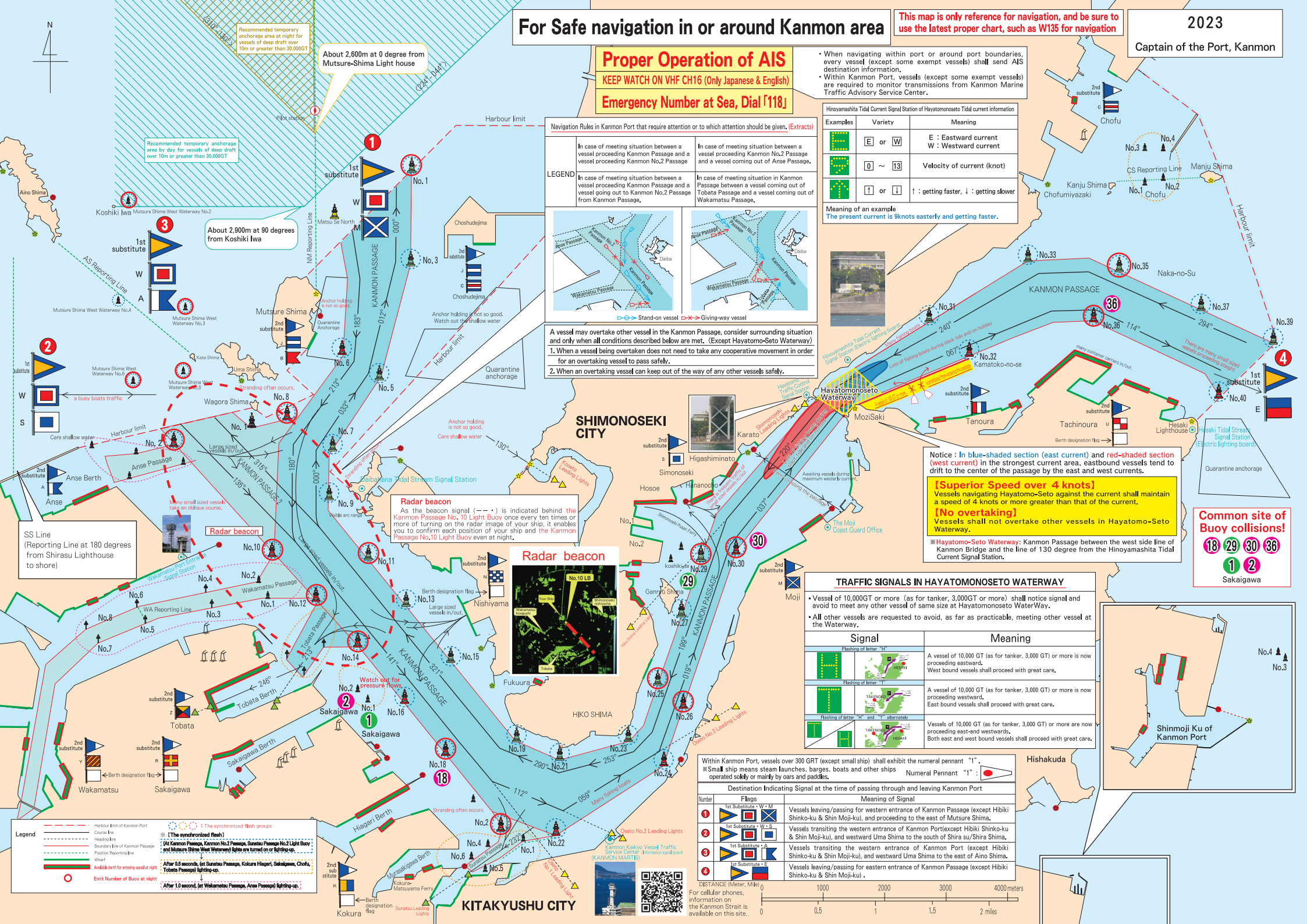
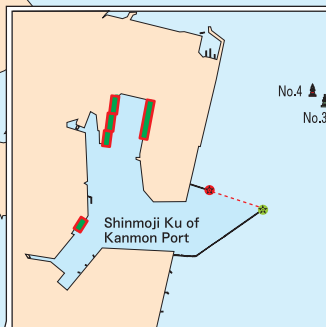
Destination Indicating Signal at the time of passing through and leaving Kanmon Port

Number	Flags	Meaning of Signal
1	1st Substitute - W - M	Vessels leaving/passing for western entrance of Kanmon Passage (except Hibiki Shinko-ku & Shin Moji-ku), and proceeding to the east of Mutsure Shima.
2	1st Substitute - W - S	Vessels transiting the western entrance of Kanmon Port(except Hibiki Shinko-ku & Shin Moji-ku), and westward Uma Shima to the south of Shira su/Shira Shima.
3	1st Substitute - A	Vessels transiting the western entrance of Kanmon Port (except Hibiki Shinko-ku & Shin Moji-ku), and westward Uma Shima to the east of Aino Shima.
4	1st Substitute - B	Vessels leaving/passing for eastern entrance of Kanmon Passage (except Hibiki Shinko-ku & Shin Moji-ku).

DISTANCE (Meter, Mile)
For cellular phones, information on the Kanmon Strait is available on this site.

Common site of Buoy collisions!

18 29 30 36
1 2
Sakaigawa



Legend
--- Harbour limit of Kanmon Port
--- Course line
--- Heading line
--- Boundary line of Kanmon Passage
--- Position reporting line
--- Wake light for entering vessel at night
--- Emit Number of Buoy at night

The synchronized flash groups
* (The synchronized flash)
* (At Kanmon Passage, Kanmon No.2 Passage, Sakaigawa Passage No.1 Light Buoy and Mutsure Shima West Waterway No.1 Light Buoy are turned on or off together.)
* After 0.8 seconds, (at Sakaigawa Passage, Kokura Harrier, Sakaigawa, Chofu, Tobata Passage) lighting-up.
* After 1.0 second, (at Wakamatsu Passage, Anse Passage) lighting-up.

Wakamatsu Coast Guard Office (Port Traffic Control Section), provides maritime traffic information as well as signal controls based on the Port Regulations Law.

Caution

- Report to Wakamatsu Coast Guard Office (Port Traffic Control Section) when entering the Wakamatsu Fairway or right before starting your navigation.
- Vessels navigating or anchoring should continue listening to and observing Ch.16 of the international VHF.

Standard Time of Control Signals

In principle the time of control signals for Wakamatsu Fairway, Okudokai Passage and Wakamatsu Ku (except for the Sections 5 and 6) are operated as follows. They are indicated on the electric signboard at the three signal stations. (If you do not observe the control signal, it will be a violation of the Port Regulations Law.)

Summer (Apr. 1 - Sep. 30)

0000	0130	0400	0530	0730	1100	1300	1500	1630	1830	2000	2130	2400
Entering	Departing	Entering	Departing	Entering	Departing	Entering	Departing	Entering	Departing	Entering	Departing	

Winter (Oct. 1 - Mar. 31)

0000	0130	0400	0530	0800	1100	1300	1500	1630	1830	2000	2130	2400
Entering	Departing	Entering	Departing	Entering	Departing	Entering	Departing	Entering	Departing	Entering	Departing	

*Please note that for both summer and winter, the signal may be switched earlier than the standard, according to the situation (at maximum it may be switched 30 minutes earlier).

(Note) Line A: The line drawn from the Wakayama Signal Station toward 288° 30' as may require.
 Line B: The line drawn from the Wakayama Signal Station toward 132.6 miles from the Wakayama Port Entrance Signal Station toward 194° 30'.
 Vessels of 300 G/T or more: Vessels less than 300 G/T: Vessels of 500 G/T or more: All vessels: may navigate must not navigate Navigation prohibited

Method of Providing Maritime Traffic Information • Specific Information (when the need arises, by the international VHF)
 Call Name: "Wakamatsu Konai Hoan" Call & Response: Ch.16 Communication: Ch.12 Ch.14 Ch.66

Yes, I will be attending

