

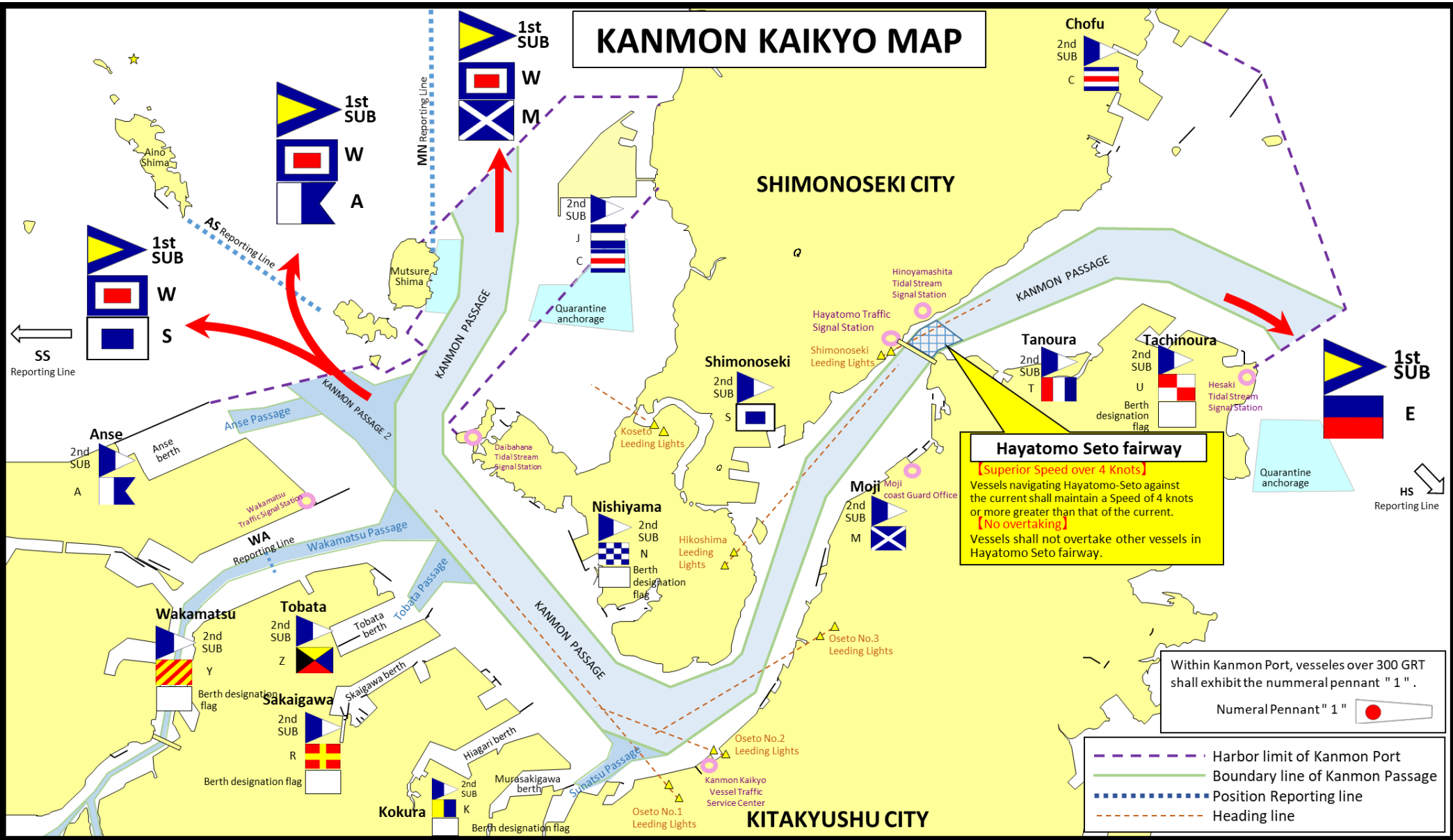
航行安全情報(関門海峡及び付近海域)

1. 位置通報ライン通過時、関門マーチスへ通報すること
2. 位置通報ライン通過予定時刻に変更(15分以上)が生じたときは関門マーチスへ通報すること
3. 航路及び航路に至る主要通航路並びにその周辺海域においては、VHF16CHを常時聴守すること
4. 早鞆瀬戸水路において、総トン数 10,000トン(油送船は 3,000トン)以上の船舶は、行き合わないこと
5. 潮流をさかのぼり、早鞆瀬戸を航行する船舶は、潮流の速度を超えて4ノット以上の速度を保つこと
6. 早鞆瀬戸水路では、他の船舶を追い越さないこと
7. 事前に関門港通過時及び出港時の行先信号を確認すること (※「KANMON KAIKYO MAP」をご参照ください)
8. AIS の目的地情報の入力をする
9. 総トン数 300 トンを超える船舶にあっては、進路信号旗とは別に「数字旗1」を掲げること


Navigational Safety (Kanmon Kaikyo and Adjacent Waters)





1. Report to Kanmon Kaikyo Vessel Traffic Service Center, “KANMON MARTIS”.
When you pass position reporting line.
2. Any change of the time (more than 15 minutes) of passing the line should be reported to KANMON MARTIS.
3. Be sure to listen to VHF CH16 while navigating in the passage, approaches to the passages and adjacent waters.
4. Vessel of 10,000GT or more (as for oil tanker, 3,000GRT or more) avoid to meet any other vessel of same size at Hayatomo Seto fairway.
5. Vessel navigating Hayatomo Seto shall keep a ground speed of 4 knots or more against the tidal current.
6. Vessels shall not overtake other vessels in Hayatomo Seto fairway.
7. Check a destination flag at the time of passing through and leaving Kanmon port.
(※Please refer to the “KANMON KAIKYO MAP”)
8. Enter the AIS destination information fields.
9. Within Kanmon Port, vessels over 300GRT shall exhibit the numeral pennant ” 1 ”.

KANMON KAIKYO MAP



Hayatomo Seto fairway
[Superior Speed over 4 Knots]
 Vessels navigating Hayatomo-Seto against the current shall maintain a Speed of 4 knots or more greater than that of the current.
[No overtaking]
 Vessels shall not overtake other vessels in Hayatomo Seto fairway.

Within Kanmon Port, vessels over 300 GRT shall exhibit the numeral pennant " 1 " .
 Numeral Pennant " 1 " 

-  Harbor limit of Kanmon Port
-  Boundary line of Kanmon Passage
-  Position Reporting line
-  Heading line